



VANISHING POINTS RECENT WORK BY MISHA GORO

VANISHING POINTS

RECENT WORK
BY MISHA GORO

VANISHING POINTS BY MISHA GORO



My story is a vivid illustration of the end of the last century – a time of deconstruction, discontinuity, and dislocation. My artistic practice is a continuous creative search for raw authenticity in urban environments and human forms that are constantly changing. Individuals change as they experience life and cities develop and/or decay through time. People and places have history and experience. Cities are weathered by time and through use, taking on a personality of their own from the people and the elements that have interacted with them. It is a combination of all of these factors that creates authenticity. Looking for subject matter I find simple things that we see every day, things that become symbolic once they are taken out of context. I experiment with the juxtaposition of places, faces, and architectural designs that reflect my diverse personal experiences.

Misha Goro,

PAINTINGS



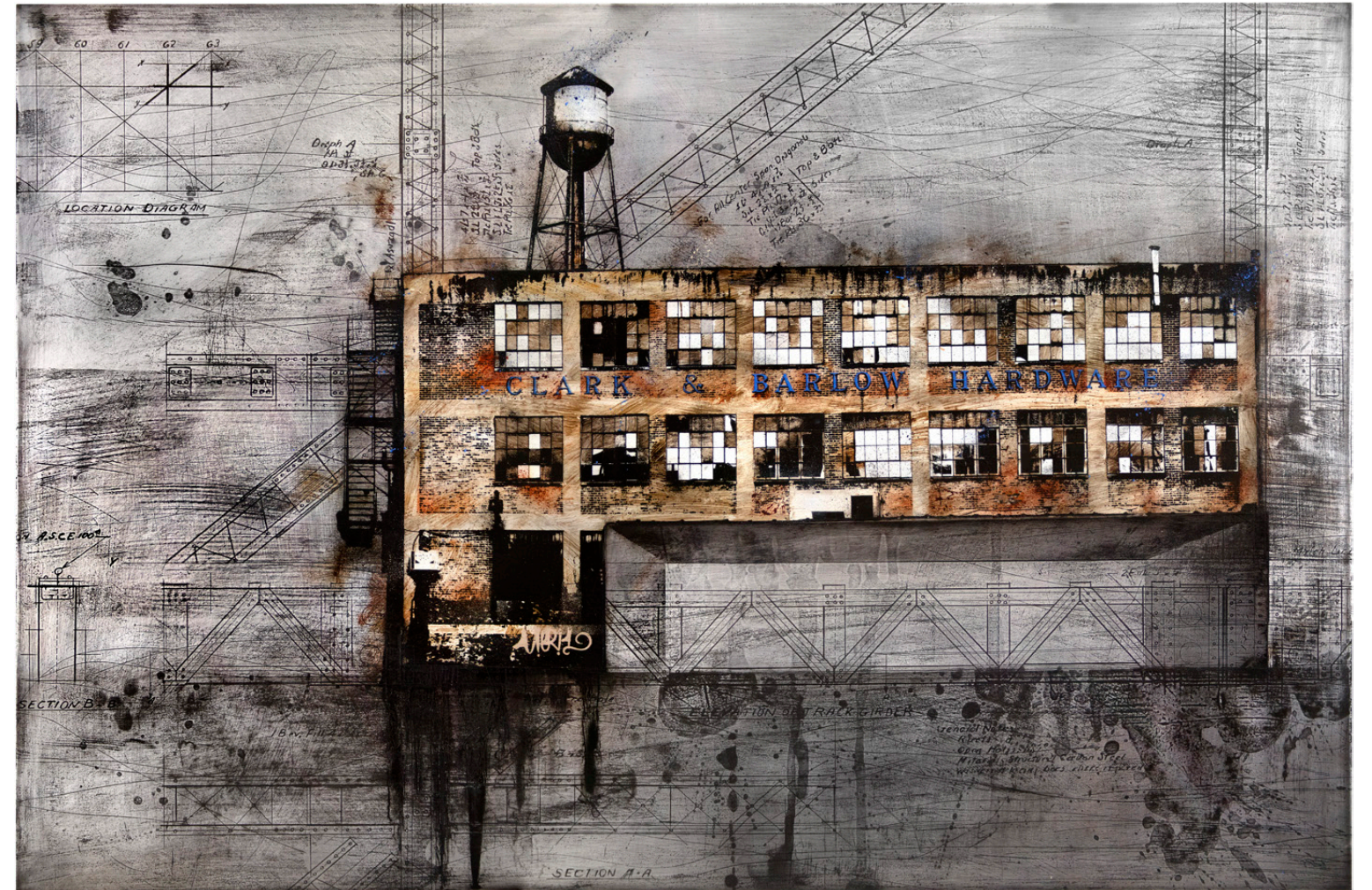
Events on the Grid

oil/mixed media on etched aluminum
32 x 48 inches



Canaletto in Chicago 4
oil/mixed media on etched aluminum
48 x 32 inches

Clark and Barlow
oil/mixed media on etched aluminum
32 x 48 inches





Look from Above

oil/mixed media on etched aluminum
32 x 48 inches

Events on the Grid

oil/mixed media on etched aluminum
32 x 48 inches





Venice 7
oil on etched aluminum
48 x 32 inches



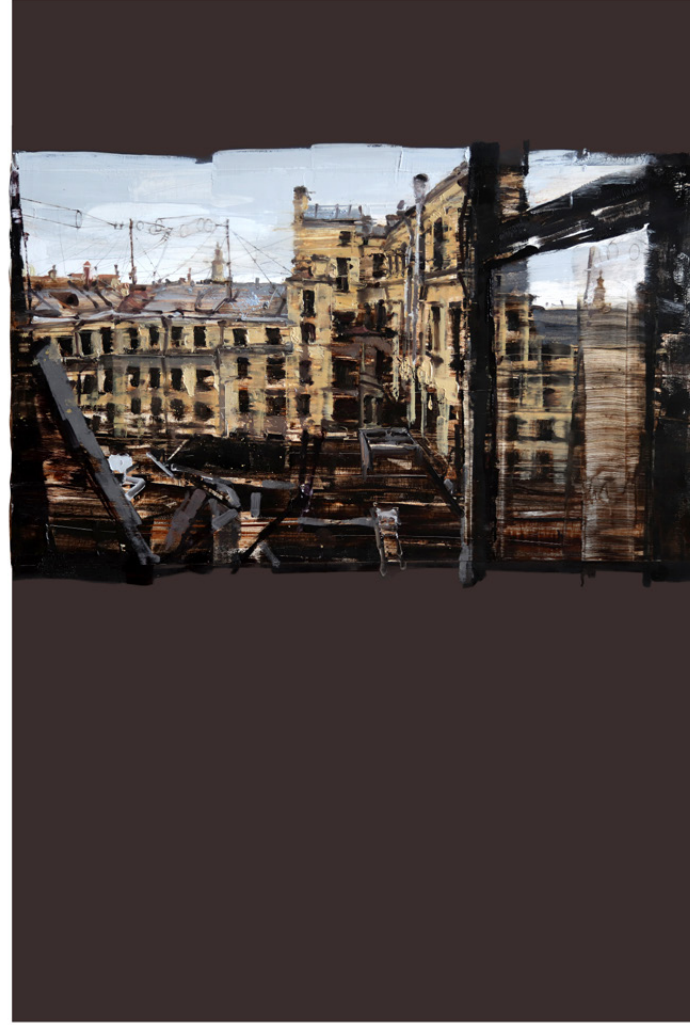
Venice 5
oil on etched aluminum
36 x 24 inches



Venice 3
oil on etched aluminum
36 x 24 inches



Venice 4
oil on etched aluminum
36 x 24 inches



Street
oil on aluminum
36 x 24 inches

Window
oil on aluminum
36 x 24 inches

Field
oil on aluminum
36 x 24 inches



Perspective in Gray
oil on wood
24 x 18 inches



Michigan Avenue
oil on wood
24 x 18 inches

View West
oil on aluminum
32 x 48 inches





**COLLABORATION
PROJECT WITH
SUSAN AURINKO**

Russian Impressions 1
oil/mixed media on
etched aluminum
32 x 48 inches

Russian Impressions 2
oil/mixed media on
etched aluminum
22 x 32 inches





Summer
oil on wood
10 x 8 inches

Fall
oil on wood
10 x 8 inches

Winter
oil on wood
10 x 8 inches

Spring
oil on wood
10 x 8 inches

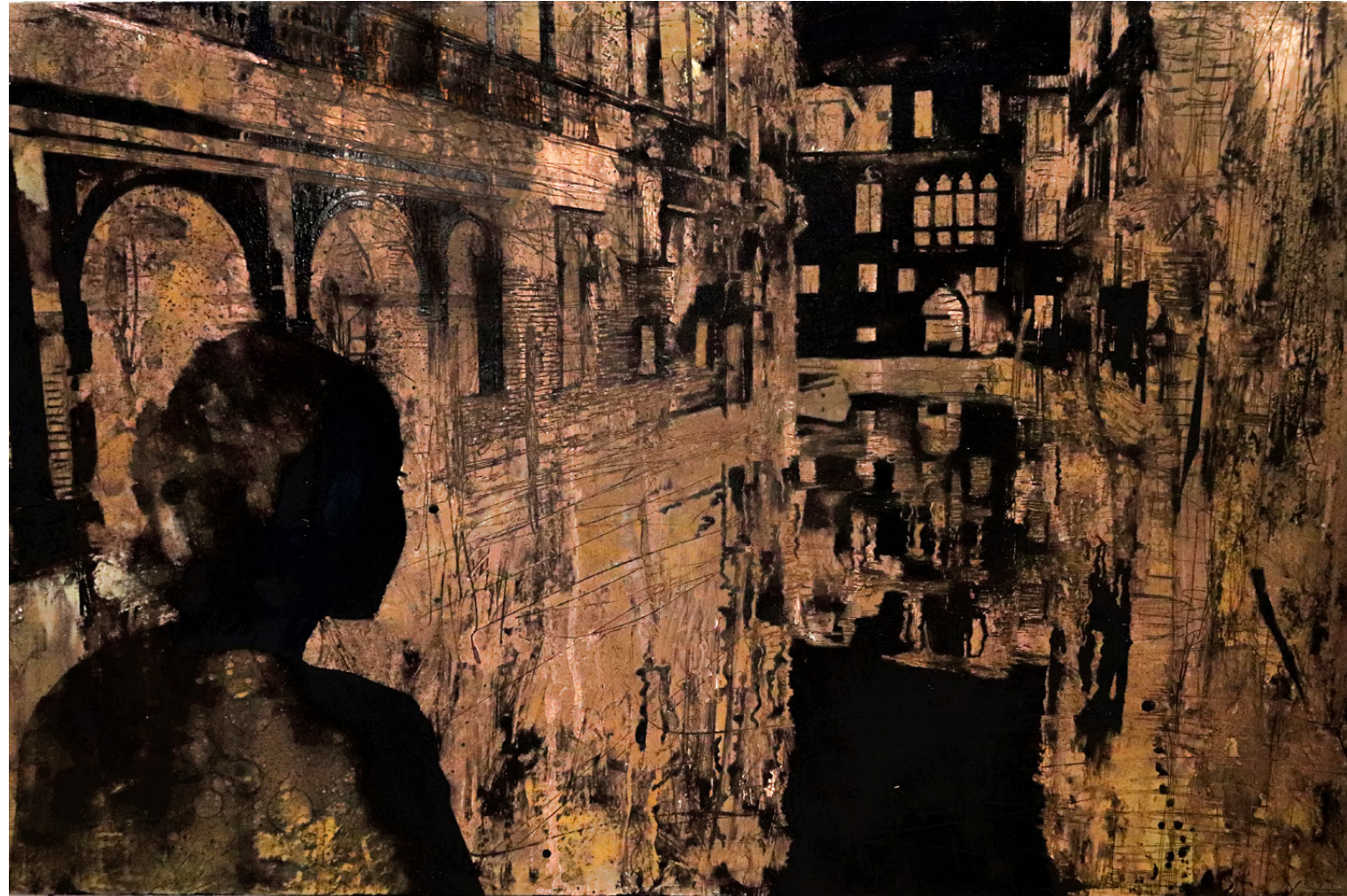
Airport 6
oil on etched aluminum
36 x 24 inches



INTAGLIO



Grand Canal
copper etching/engraving
24 x 36 inches



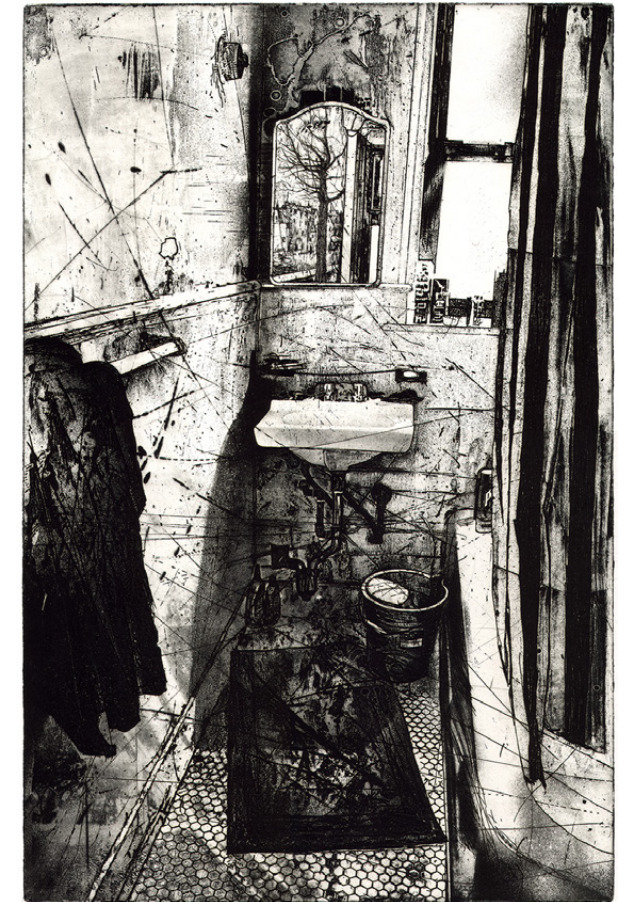
Anastasia (work in progress)
copper plate
24 x 36 inches



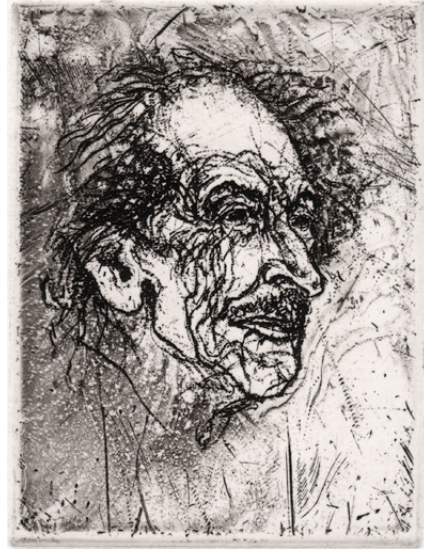
Anastasia
copper etching/engraving
24 x 36 inches



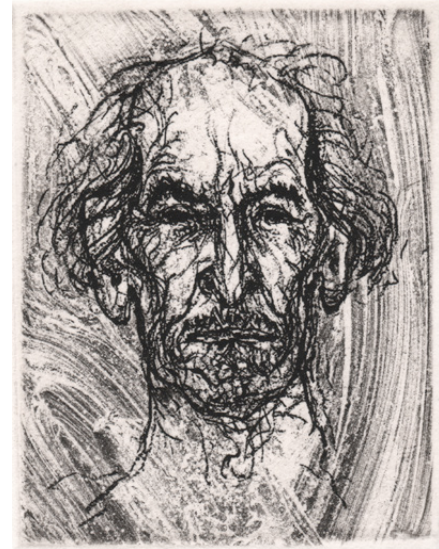
Chicago Blues
copper etching/engraving
24 x 36 inches



Mirror
copper etching/engraving
24 x 18 inches

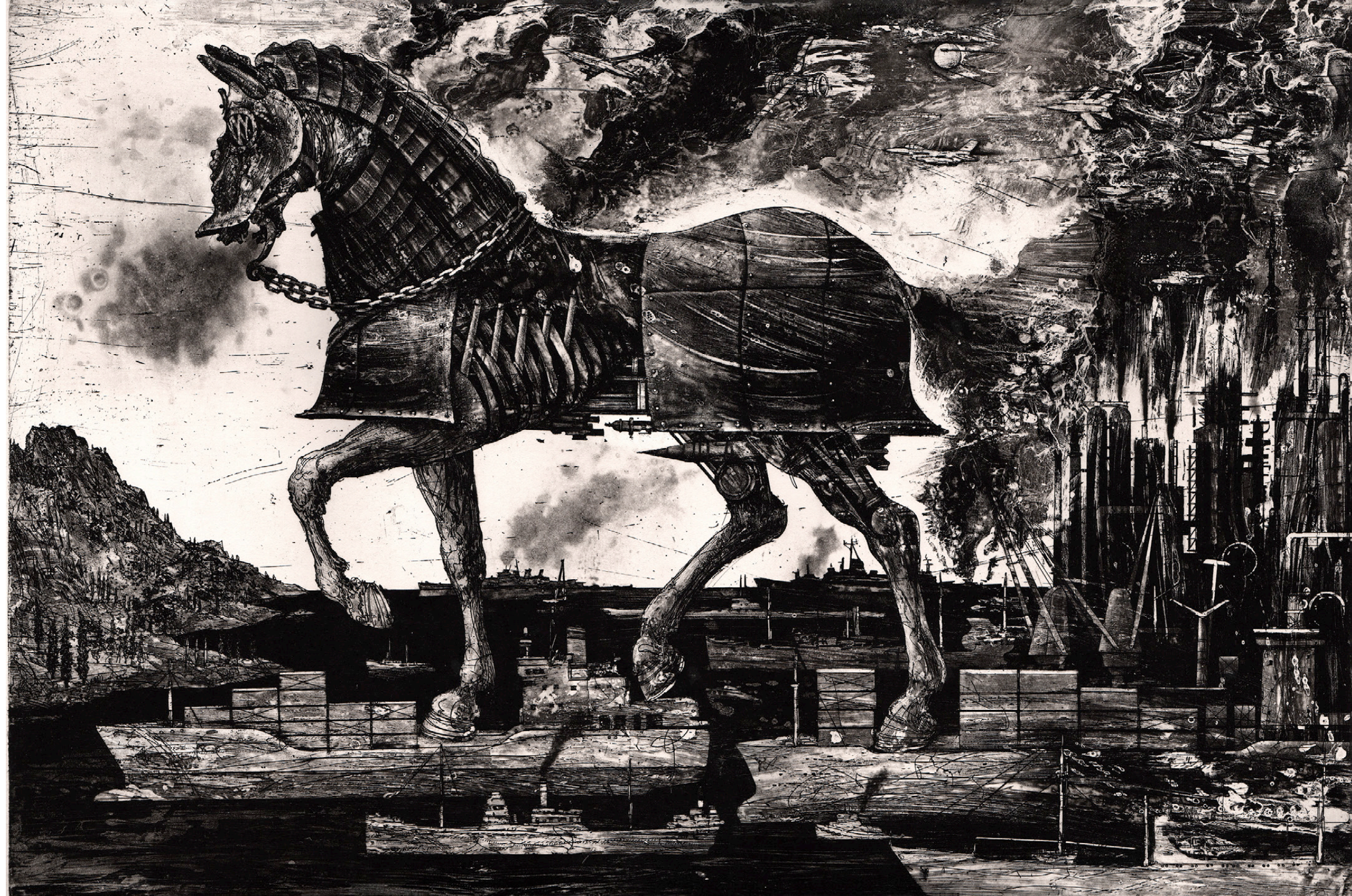


Point in time 1
copper etching/engraving
4 x 3 inches



Point in time 2
copper etching/engraving
4 x 3 inches

Knights Gambit
copper etching/engraving
24 x 36 inches





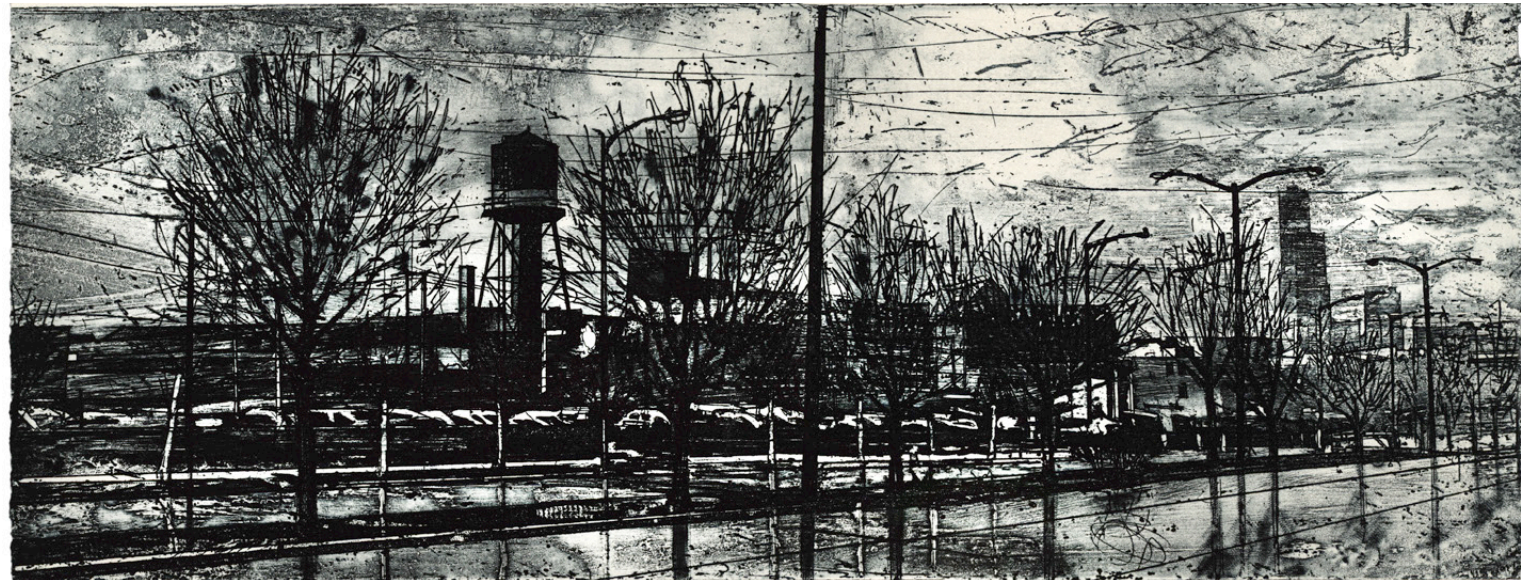
Listen to Your Master's Voice
copper etching/engraving
9 x 7 inches



Call of the Wild
copper etching/engraving
5.5 x 5.5 inches

A Fish Rots From the Head Down
copper etching/engraving
24 x 36 inches

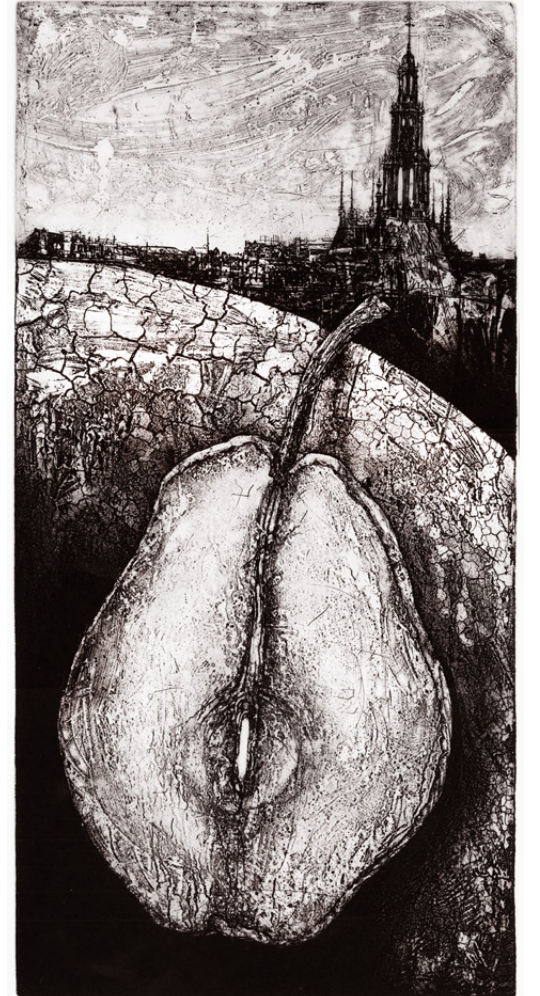
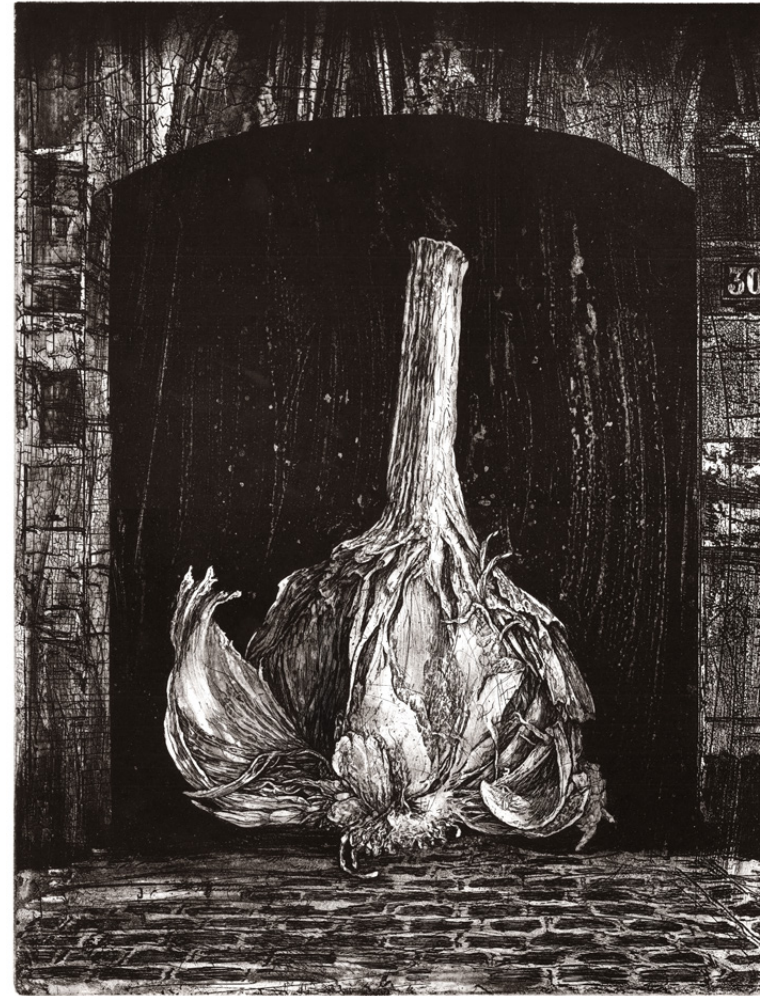




Driving North
copper etching/engraving
19 x 32 inches

Boulevard Voltaire
copper etching/engraving
21 x 16 inches

Boulevard st. Martin
copper etching/engraving
24 x 12 inches





La Seine
copper etching/engraving
24 x 20 inches

Reflections
copper etching/engraving
36 x 24 inches





SUSAN AURINKO, CURATOR

Susan Aurinko has created well over 100 exhibitions, at FLATFILEgalleries, the gallery she founded and directed for nine years, and in a variety of other gallery and museum venues, including IIT, where she created exhibitions for both the Japanese and Danish governments. For over 20 years Aurinko curated the rotating exhibitions at the Union League Club of Chicago, and is now the curator for Primitive Chicago's Galerie One, as well as Curators Gone Rogue, in which she partners with Susan Blackman. She has lectured and led workshops in Italy, France, India, Canada, and the US.



MISHA GORO

Misha Goro, a prominent painter, printmaker, and educator, has lived and worked in Russia, Europe, Israel, and the USA. He has completed his education receiving M.F.A. in printmaking at the University of Illinois at Urbana-Champaign. Currently, he holds the position of chairperson of the graphics design department at the American Academy of Art College in Chicago. His works can be found in numerous private and public collections and have received a number of prestigious international awards in Japan, Korea, Europe, China, and the USA.

CELECTED PUBLIC COLLECTIONS

- LUMA, The Loyola University Museum of Art** Chicago, USA
- Bibliothèque Nationale de France** Paris, France
- Achille Bertarelli** Civic Print Collection, Milan, Italy
- Fondazione Il Bisonte** Florence, Italy
- Kenosha Public Museum** Kenosha, Wisconsin, USA
- Guanlan Printmaking Art Museum** Guanlan, China
- Printmaking Museum of Douro** Douro, Portugal
- Museum of Engraving – Paleologi Castle** Acqui Terme, Italy
- Imprint Contemporary Graphic Art Collection** Warsaw, Poland
- Frans Masereel Center** Kasterlee, Belgium
- Guanlan Print Orginial Industry Base** Shenzhen, China
- Ino-cho Paper Museum** Ino-cho Kochi-ken, Japan
- Space Group** Seoul Museum of Art, Seoul, Korea
- Municipal Museum of Art** Gyor, Hungary
- Library of Congress** Washington, DC, USA
- Newberry Library** Chicago, Illinois, USA
- International Print Society Krakow** Krakow, Poland
- Kanagawa Arts Foundation** Yokohama, Japan
- Krannert Art Museum** Urbana-Champaign, Illinois, USA
- University of Illinois, President's House** Urbana, Illinois, USA
- Center for Book and Paper Arts** Columbia College, Chicago, USA

CELECTED PRIZES + AWARDS

- Best of Show 5th Annual Juried Art Competition** Bridgeport Art Center, Chicago, USA,
- Special Mention** The 10th Edition of the Leonardo Sciascia Prize amateur d'estampes, Achille Bertarelli Civic Print Collection, Milan, Italy,
- Yunnan International silver prize** 1st Yunnan International Print Exhibition, Yunnan Museum in Kunming, Yunnan, China,
- Guanlan International Print Prize (top prize)** 1st Guanlan International Print Biennial, Guanlan Print Original Industry Base, Shenzhen, China
- London Print Studio Award** 7th Royal West of England Academy Open Print Exhibition, Royal West of England Academy, Bristol, UK,
- Purchase Prize** 1st SPACE Internaional Print Biennial_Seoul Seoul Museum of Art, Seoul, Korea,
- Fourth Prize** The 10th Kochi International Triennial Exhibition of Prints Ino-cho Paper Museum, Ino-cho Kochi-ken, Japan,
- Excellent Prize** 1st Seoul_Space International Print Biennial Seoul Museum of Art, Seoul, Korea,
- Special Prize** International Print Triennial in Kanagawa' 10, Kanagawa Arts Foundation, Yokohama, Japan,
- Special Recognition Award** Watermark 10, Studio 107, Whiteville, North Carolina, USA,
- Juror's Award** 10th Annual National Print Competition at Artlink Artlink Contemporary Art Gallery, Fort Wayne, Indiana, USA,
- Juror's Award** 10th Annual National Print Competition at Artlink Artlink Contemporary Art Gallery, Fort Wayne, Indiana, USA,



PRIMITIVE

130 NORTH JEFFERSON, CHICAGO

TELEPHONE: 312-575-9600

WWW.BEPRIMITIVE.COM